

Granvista Plus

GVP-270

Quick Installation Guide



ENGLISH

Package Contents

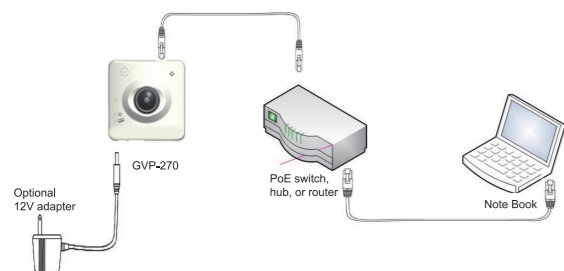
When you get this Network Camera, you must double check the following items are present.



Precautions before startup

- a. Turn the power off immediately in case any odor or smokes are detected.
- b. Never drop, shake or strike on the camera
- c. Do not touch the camera in case there are lightening or storms outside
- d. Never spray any liquid on the camera body

Hardware Connection



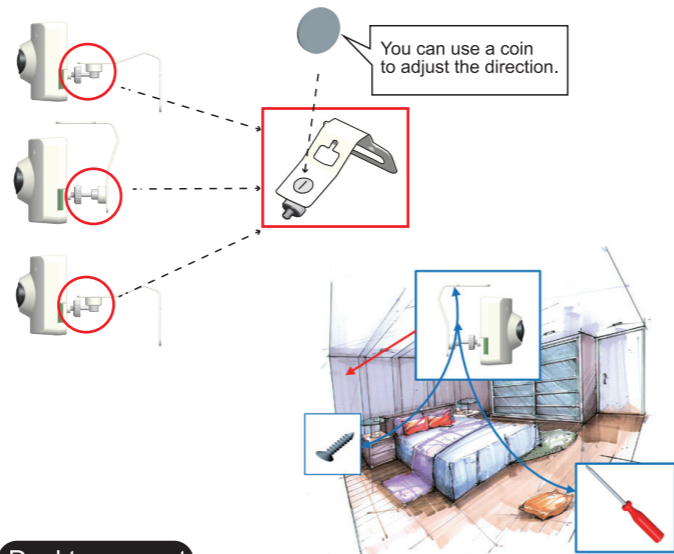
- a. Make both camera and PC connected to a local network through the RJ45 port. This camera supports PoE thus it can be powered by a PoE switch. If there is no PoE switch available then an 12V/1A adapter will be needed to feed into the camera's power jack.
- b. The LED status light should come up if the camera is properly powered.

How to mount the GVP-270?

There are many ways of installing the GPV-270, wall mount, ceiling mount or desktop mount.

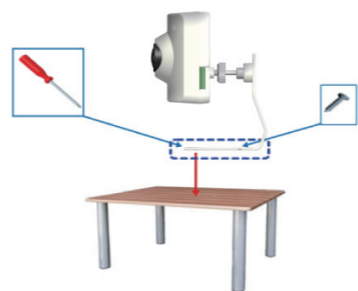
Wall mount / Ceiling mount

You may install the GVP-270 on the wall by securing the mounting bracket with the screws inside its packing box. A coin can be very helpful when you want to adjust the view angle.



Desktop mount

You may install the GPV-270 simply on a desktop if you want



Software Installation

The following software is necessary for the proper display and use of the GVP-270 from the Web site. The software can be found in the Software Package CD.

IP Installer

The IP Installer is used to locate and configure network cameras in the LAN. This utility is useful for conveniently configuring the network settings of the device, or for finding a device once the network settings have been modified.

To install the IP Installer software, simply click its "setup" program from the respective IP Installer folder in the CD, and then complete the whole installation process.

K-Lite Codec Pack

K-Lite Codec tool is able to encode and/or decode audio and video data. The K-Lite Codec is designed as a user-friendly solution for playing almost all of your movie files downloaded from web.

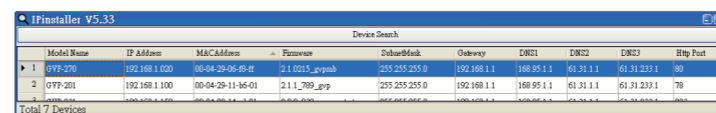
VLC

It is a good software, but not necessarily required, this VLC can be used for streaming without a web browser. VLC uses RTSP protocol which is different from HTTP protocol. The user may configure the path for video/ audio streaming accordingly.

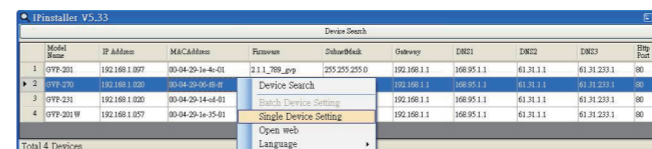
Network Configuration

★ Using IP Installer to assign IP address

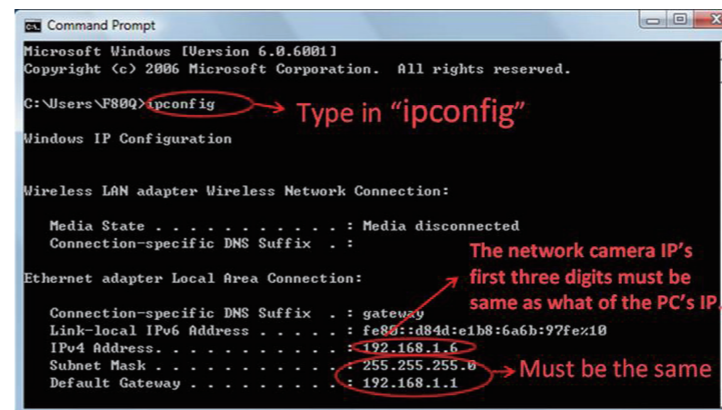
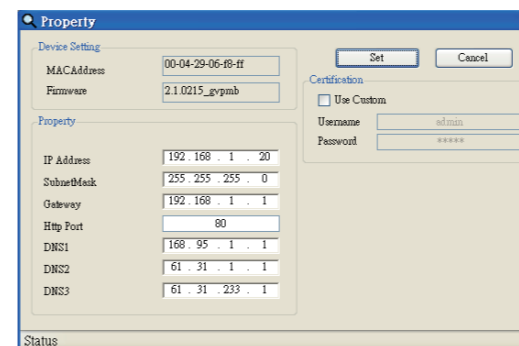
- a. Simply click its upper "Device Search" tool bar to search the device inside the LAN.
- b. The firewalls of your Windows or Anti-virus software might block IP Installer from searching the cameras. In this case you would need to unblock IP Installer software from the firewalls, or to manually make this IP Installer software an exception to the firewalls.
- c. Select the device with the MAC Address corresponds to the camera that is to be configured.



- d. Set the camera newly found, right-click it, and then choose the "Single Device Setting" from the slide-bar manual.

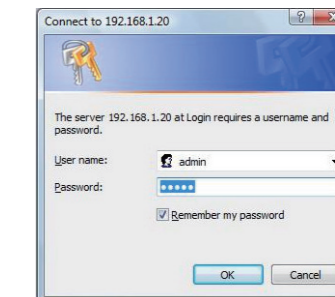
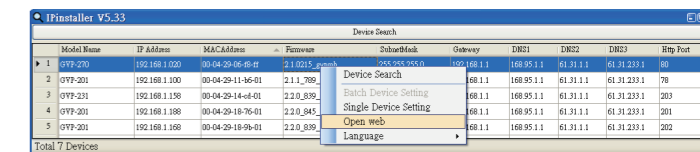


- e. After filling in the properties, click [Set] button to complete the configuration settings. Please note that the Subnet Mask and Gateway settings must be same as the PC's network settings, and the first three digits of the network camera's IP address must be the same as the PC's IP address.



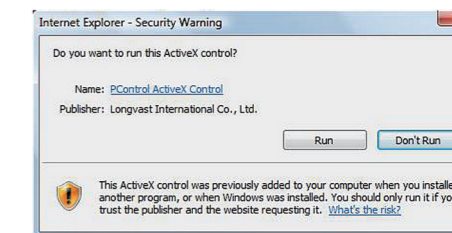
Open the Web-based User-Interface Program

- a. To access the web-based user-interface program such as the Microsoft Internet Explorer, right-click for the slide-bar manual, and then choose the "Open web" function to open the program.

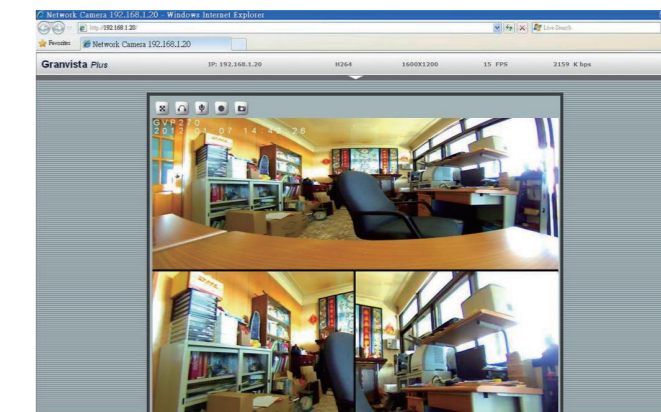


* Username and password are required. (Default are "admin" and "admin")

- b. For first-time user, there will be a prompt to install the ActiveX control to the web browser. Confirm the installation as it is required to view the video stream and some operations.



- c. Verify and complete the installation from your browser. If not able to get the ActiveX downloaded properly, user must temporarily lower the security settings to perform a one-time-only installation of the ActiveX component onto the PC, as described below:
 - From the Tools menu, select [Internet Options] -> [Security] -> [Custom Level].
 - Set the security level to Low and click [OK].
 - Depends on different versions of browser software used, the user may have to set the individual ActiveX settings from "Disable" to "Prompt" or "Enable" if necessary for completing the ActiveX program download.
 - Restore the security level after the ActiveX installation.
- d. If the device has been configured correctly, the default web browser will open to the home page of the selected device.



Attention:
As our products are subject to continuous improvements for excellence, information in this document is subject to change without notice.