

# BioSense III - T

## Touch Key Fingerprint Access

- 400 sets of function key
- Anti pass back/ Anti duress
- Basic Time & Attendance (First IN/Last OUT)
- Color screen with touch keypad
- LOGs data real time PUSH
- Indoor and outdoor use(IP65 certificated)
- Standalone, WEB-Based Management and network capability
- Support AUTO Get IP(DHCP) for easy setup



## Specifications

### GENERAL DATA

Software Application	SoMac/Browser/APP
Verification Mode	Fingerprint/Card/PIN
Proximity	EM/Mifare/HID
Fingerprint Template Capacity	9,590
Fingerprint Sensor Type	Optical
Fingerprint Sensor Resolution	500 dpi
1:1 Verification Time	<600 msec
1:1,000 Identification Time	<760 msec
User Capacity	20,000
Function Keys	400 SET
Time Sets/Time Zones/Group	255/120/255 SET
Holiday Dates	100 SET
Access&Event Logs/System Logs	65536/1536
Inputs	3 Inputs, (1)Exit button (2)Door Sensor(3)Fire Alarm
Relay Outputs	1 output for Lock(COM/NO/NC)
Web Base Management	Yes
Support real time log	Yes
PUSH methodology	
Wiegand Inputs	26/34 bits Wiegand reader
Wiegand Outputs	26/34 bits Wiegand reader
IP Mode	Static IP/AUTO IP(DHCP Client)

LED Indicators Blue/Green/Red LED

Speaker Indication Optional

Buzzer Single Tone

TFT Color LCD 2.8"

Capacitive Touch Keys 4x4

Anti-Tampering Switch Yes

### COMMUNICATION DATA

TCP/IP 10/100 Base-T

Wiegand 26/34 bits

### ELECTRICAL DATA & CONDITIONS

Power Consumption 500 mA ± 5%

Operation Voltage 9 ~ 24VDC/1A

Output Relay 30VDC, 1A

Operation Temperature 0°C ~ 65°C

Operation Humidity 5% ~ 80% RH

### PHYSICAL DATA

Dimension 160.2x140.2x46.7mm

Weight 0.6 kg

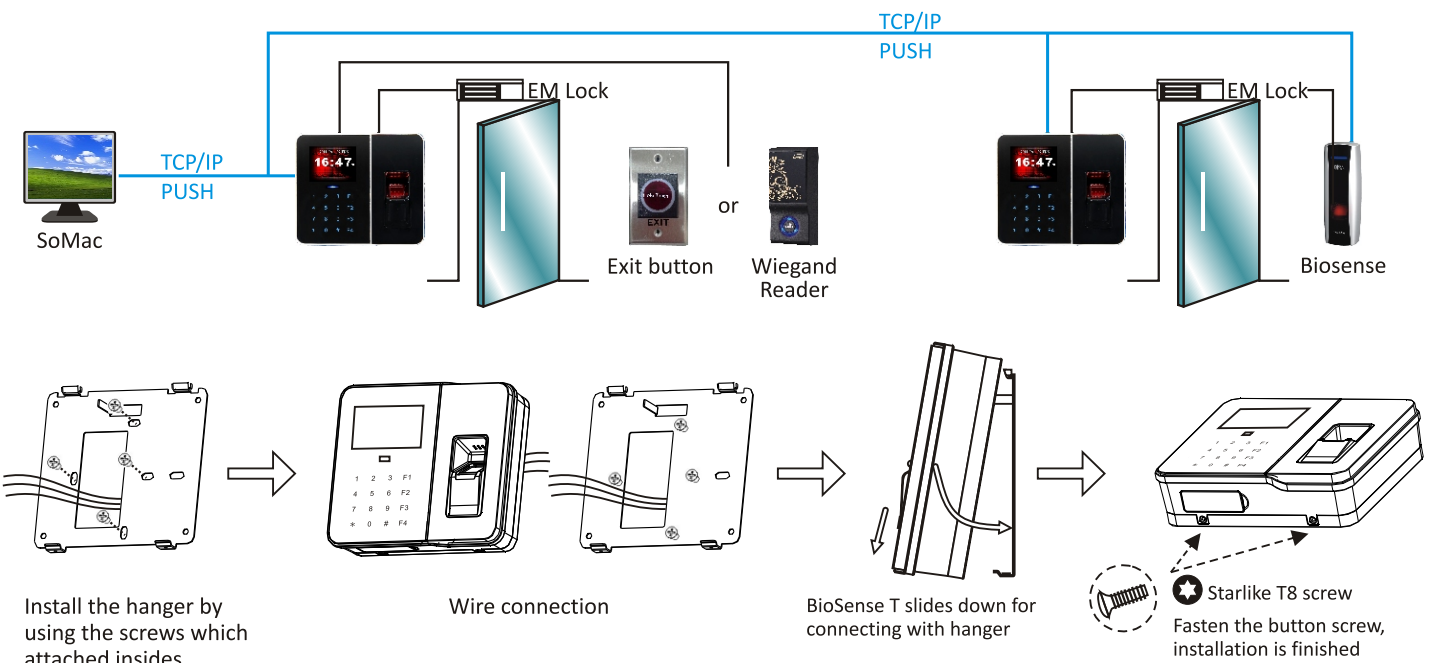
Installation Indoor/Outdoor(IP65 weatherproof)

### INTERNATIONAL STANDARDS & WARRANTY

Certification CE, FCC, ROHS

Warranty 2 Years (Fingerprint module: 1 year)

## Structure



## Ordering information

E: EM 125KHz M: Mifare 13.56MHz H: HID 125KHz