

CYT-100SC

User Manual



Document Version 1.0

Web Version 1.1 2011-02-09

Firmware Version 1.01.00, Mar 4 2011

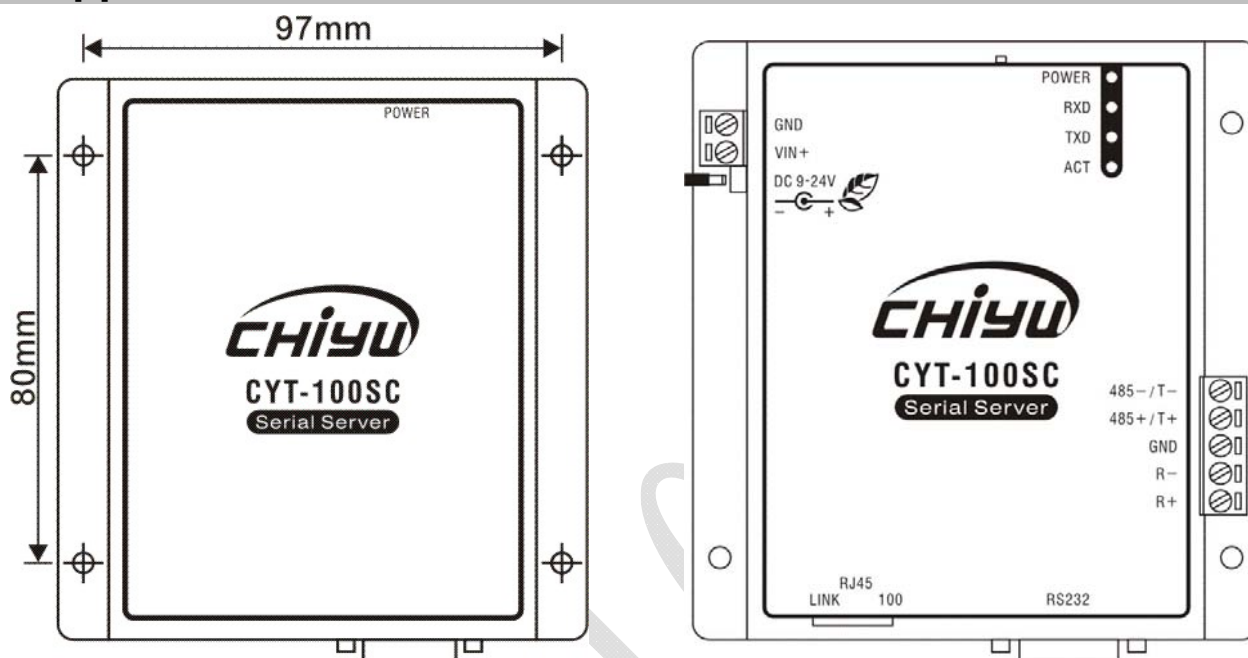
【Index】

| | |
|---|----|
| I 、 Hardware Introduction..... | 1 |
| II 、 Product Overview..... | 3 |
| III 、 WEB Login..... | 4 |
| IV 、 Web Function Instruction..... | 10 |
| One Page Quick Setup..... | 10 |
| Advanced Setup..... | 13 |
| 1 、 Operation Mode..... | 13 |
| (1)TCP Server..... | 13 |
| (2) TCP Client..... | 14 |
| (3)UDP..... | 15 |
| 2 、 Serial Port Setup..... | 16 |
| 3 、 DDNS Setup..... | 17 |
| (1)TZ0..... | 17 |
| (2) Dyn dns..... | 18 |
| Management..... | 19 |
| 1 、 Device Administration Setting..... | 19 |
| 2 、 System Status Monitor..... | 20 |
| 3 、 Backup & Restore Configuration..... | 21 |
| 4 、 Firmware Upgrade..... | 22 |
| 5 、 PING..... | 23 |

— CYT-100SC —

I 、 Hardware Introduction

◆ Appearance

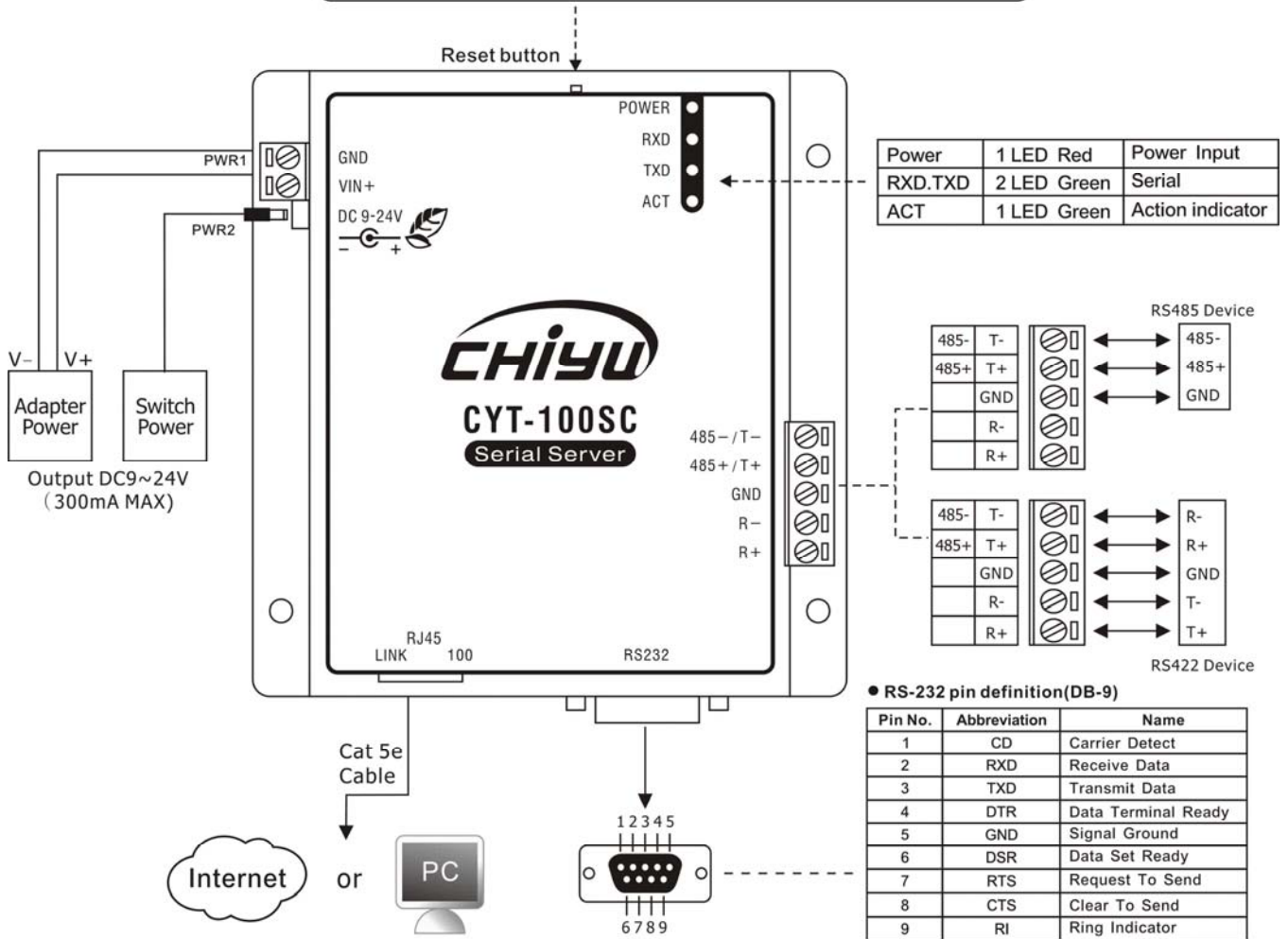


◆ Specification

| Item | Specification |
|----------------------------|--|
| CPU | 16 Bits, 100MHz |
| Memory | 256KB Flash & 2MB SDRAM |
| Watchdog | System never halt |
| Ethernet | 10/100 Base-T/Tx/, Automatic MSI/MDI-x port |
| Communication Port | RS232, RS 422, RS 485 |
| Connectors | DB9(MALE)/RJ-45 |
| RS-232 | TxD, RxD, RTS, CTS, DTR, DSR, DCD,RI,GND |
| RS-422 | Tx+,Tx-, Rx+, Rx-,GND (1200M for the longest distance) |
| RS-485 | Data+, Data-,GND (1200M for the longest distance) |
| Power Input | Choose one : PWR1: DC9~24V(300MA MAX) 2-pin Separate terminal PWR2: DC9~24V(300MA MAX) DC power to DC socket |
| Operating Temperature | 0°C ~ 55°C |
| Operating Humidity | 5 ~ 95%RH |
| Storage Temperature | -20°C ~ 85°C |
| Surge Protection | Serial port 15KV ESD |
| Electromagnetic protection | Ethernet port 1.5KV |
| LED Indicator | Power / RXD / TXD / ACT |
| Weight | 315g |
| Dimensions (L x W x H) | 106.5(86.5 without ear loop)*115(110 without RS232)*28mm |

◆ End point

Reset button
 Reboot: Push button 2 seconds at power on status
 Factory Default: Push button at power off status then power on and keep push around 5 seconds



II 、 Product Overview

CYT-100SC is a RS232/RS485/RS422 converter for the integration of system and Ethernet management, designed and applied to enable traditional industrial serial devices to access data and control devices through Ethernet (intranet or internet)

Real time operation system and complete TCP/IP protocol enable CHIYU's CYT-100SC powerful converter not only providing complete system with highly efficiency but also able to link with network. Easy to install and wire. The Web interface of CYT-100SC is simple, easily to operate, and without operation system limitation.

◆ Features

- CYT-100SC support 4 kinds of connection: TCP server, TCP client, UDP, Real com Users can select suitable connecting way.
- Support DHCP Client, when activate this function, CYT-100SC can get TCP/IP default from DHCP Server when the system activates, Includes IP address, default gateway IP and DNS server.
- Support PPPoE, PPPoE is an internet protocol for the link simulation of dial-up connection and remote host.
- Support Dynamic DNS, this enable CYT-100SC connect with dynamic IP by fixed Domain Name, enable hosts situated in different location to get access to CYT-100SC through internet.
- Auto detecting 10/100 M Ethernet.
- Enable users to conduct data access or management on CYT-100SC through various operation system of IE , Netscape browser.
- Allows users to back up and store file system parameter and restore it, for security reasons the backup file will be stored encrypted.
- Over Voltage protection on Serial port.
- Can be mounted on DIN-Rail, available for TS35 DIN Rail
- Provide status and connection of serial port and IP port monitoring and alert on web management automatically

III 、 WEB Login

CYT-100SC contains a HTTP server, thus CYT-100SC can link and connect through Web browser, and then conduct setting.

◆ Preparation

Before conducting CYT-100SC setting, please assure the following:

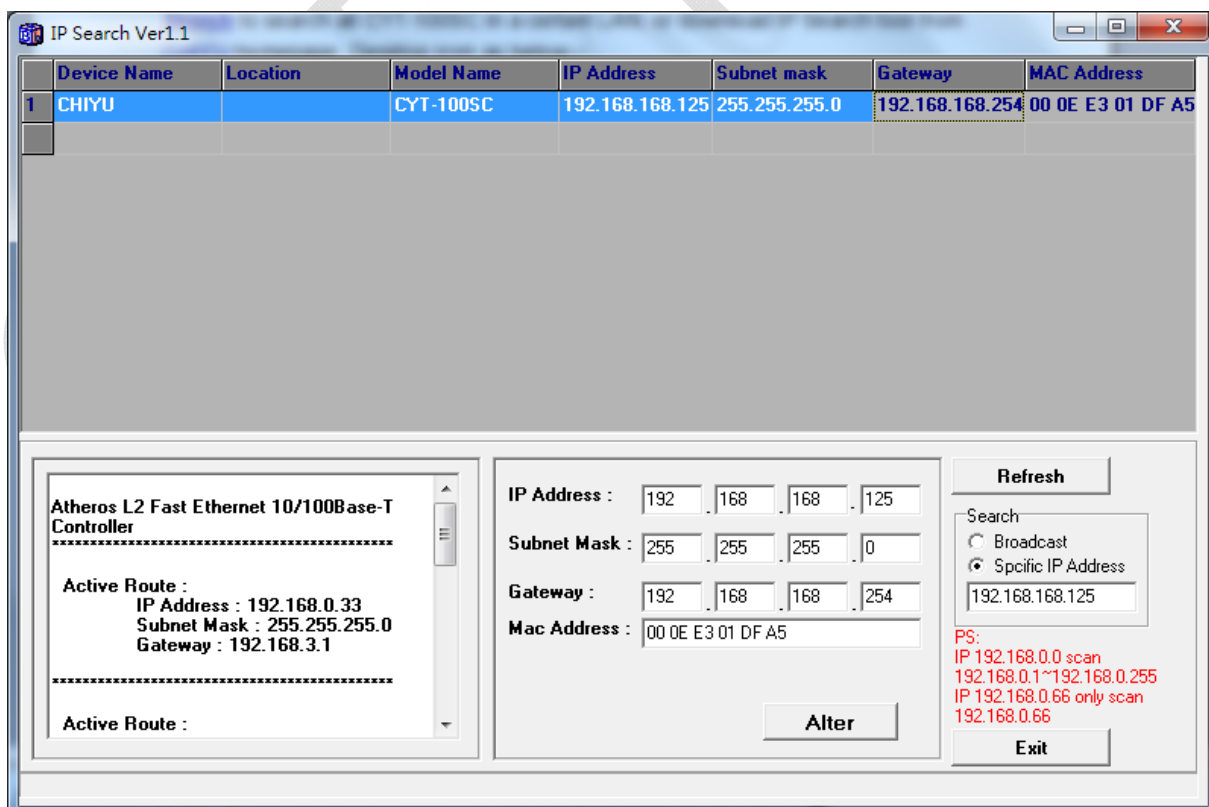
- PC has connected to CYT-100SC, and PC and CYT-100SC are situated in the same WAN with power supplied.
- If the default IP address (192.168.168.125) is occupied by else device, then it is a must to shut down that device first till the setting is over, and then allocate new IP address to CYT-100SC.

◆ How to search CYT-100SC

- 1、 After installation of CYT-100SC and network cable is completed, use CYT-100SC's [IP Search](#) to search all CYT-100SC in a certain LAN, or download IP Search tool from [CHIYU](#) homepage. Desktop icon as below:



- 2、 Click IP Search icon, will display a window, as shown:



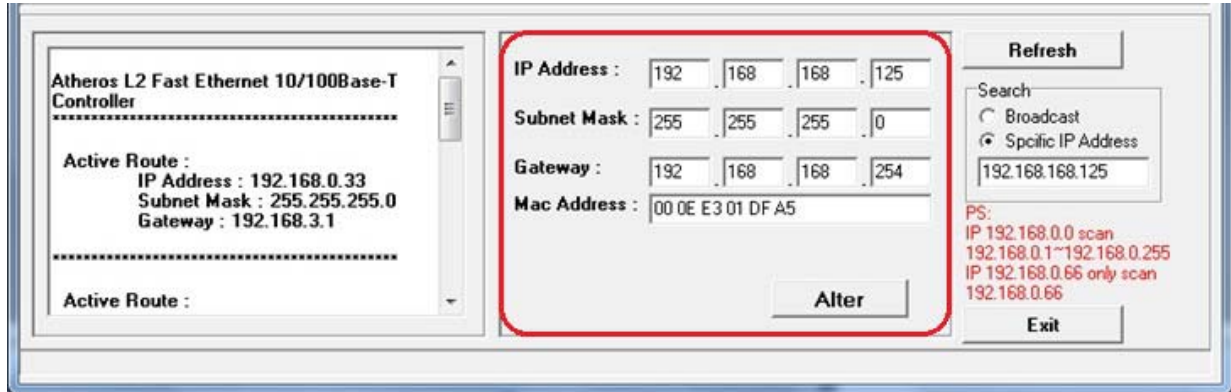
| Device Name | Location | Model Name | IP Address | Subnet mask | Gateway | MAC Address |
|-------------|----------|------------|-----------------|---------------|-----------------|-------------------|
| 1 CHIYU | | CYT-100SC | 192.168.168.125 | 255.255.255.0 | 192.168.168.254 | 00 0E E3 01 DF A5 |

Atheros L2 Fast Ethernet 10/100Base-T Controller
 Active Route :
 IP Address : 192.168.0.33
 Subnet Mask : 255.255.255.0
 Gateway : 192.168.3.1

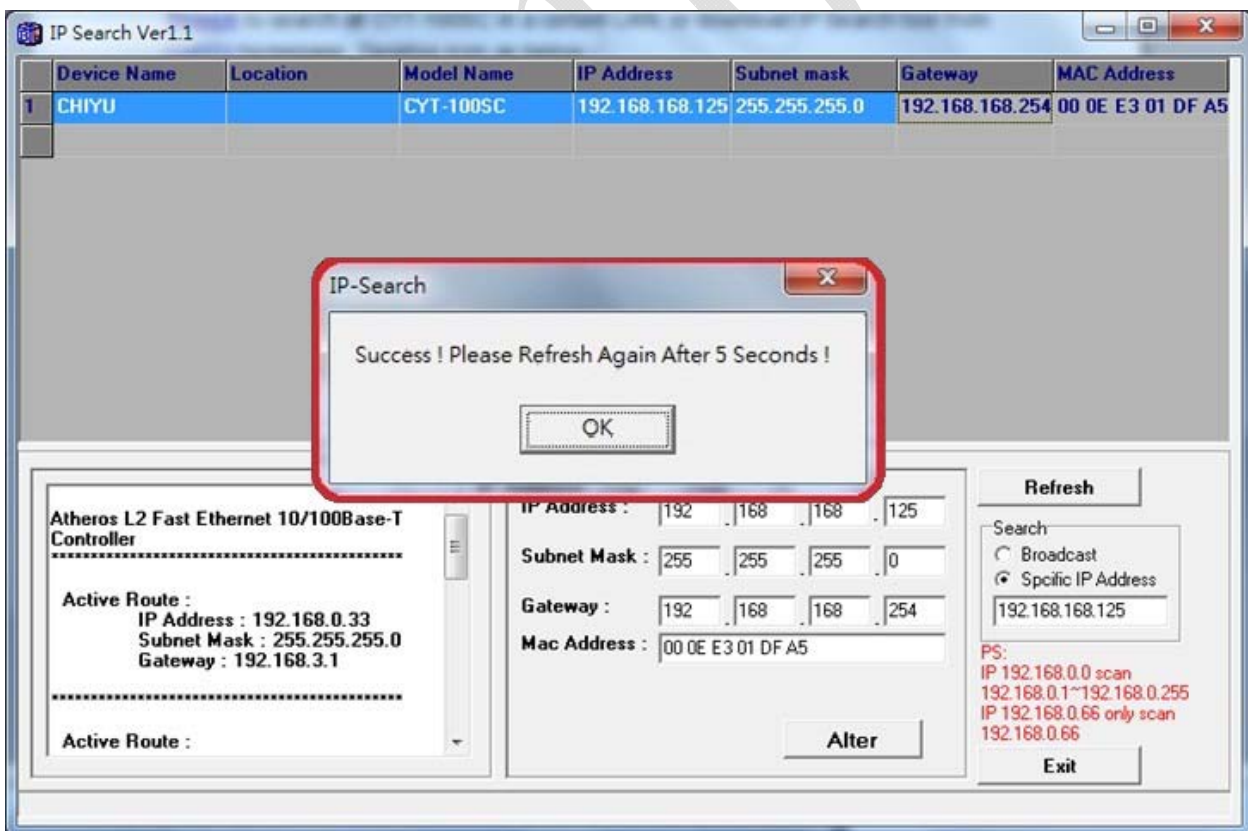
IP Address : 192 . 168 . 168 . 125
 Subnet Mask : 255 . 255 . 255 . 0
 Gateway : 192 . 168 . 168 . 254
 Mac Address : 00 0E E3 01 DF A5

Refresh
 Search
 Broadcast
 Specific IP Address
 192.168.168.125
 PS:
 IP 192.168.0.0 scan
 192.168.0.1~192.168.0.255
 IP 192.168.0.66 only scan
 192.168.0.66
 Alter
 Exit

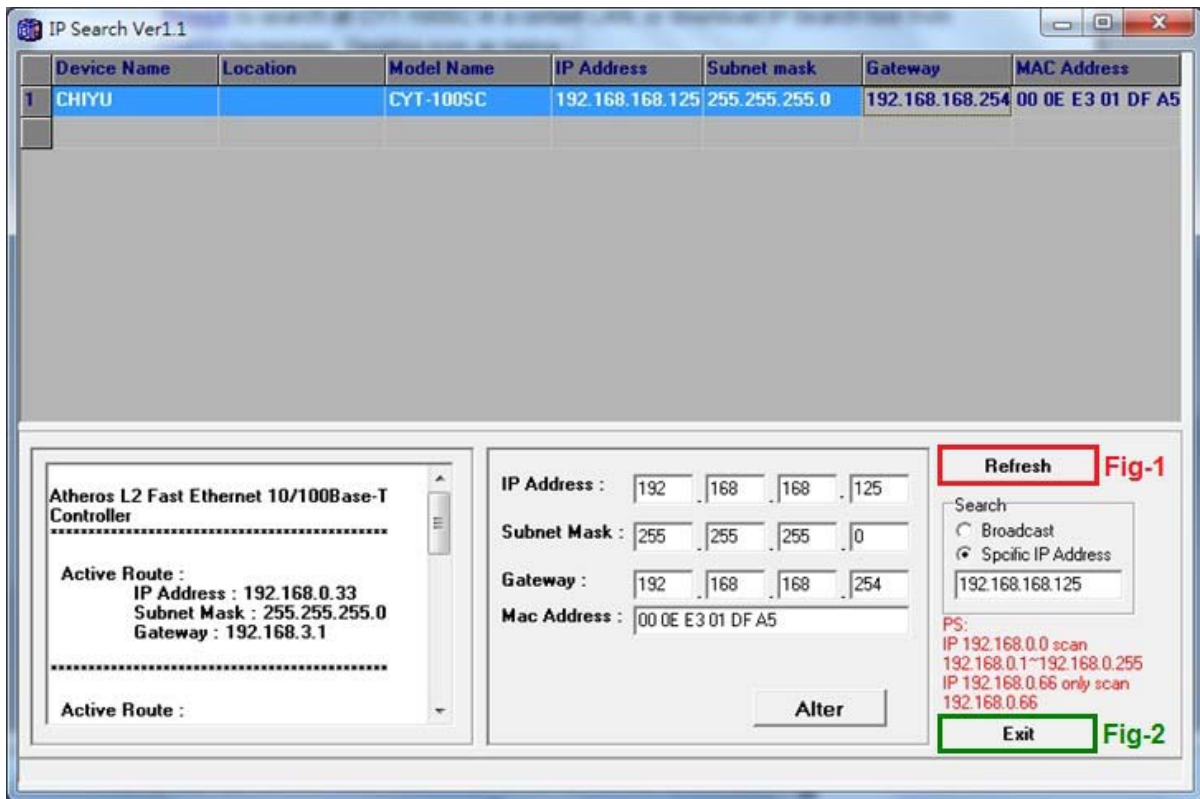
- 3 · While the IP Search window shows up, it will display all CYT-100SC in LAN, and show its **Device name**, **Location**, **Model Name**, **IP Address**, **Subnet Mark**, **Gateway**, **Mac Address**. Select particular CYT-100SC, then its related information will appear below the window, as shown:



- 4 · The showed information of CYT-100SC can be revised directly in the window, the part can be modified: IP Address, Subnet Mask, Gateway. After modification completed (**MAC Address can not modify**), click **Alter** then it will display the modified information, as shown:



5、After modification, if want to confirm whether the modification is correct or not, click [Refresh](#) button to refresh and check information (Fig-1), click [Exit](#) button to leave.(Fig-2)



6、After modification, the IP address of CYT-100SC has matched with its WAN, if want to get access into the Web of CYT-100SC, has two methods:

- (1)Open IP Search, select and double click particular CTY-100SC, then to enter its webpage.
- (2)While the internet explorer opened, input CYT-100SC IP address to enter its webpage

Remark :

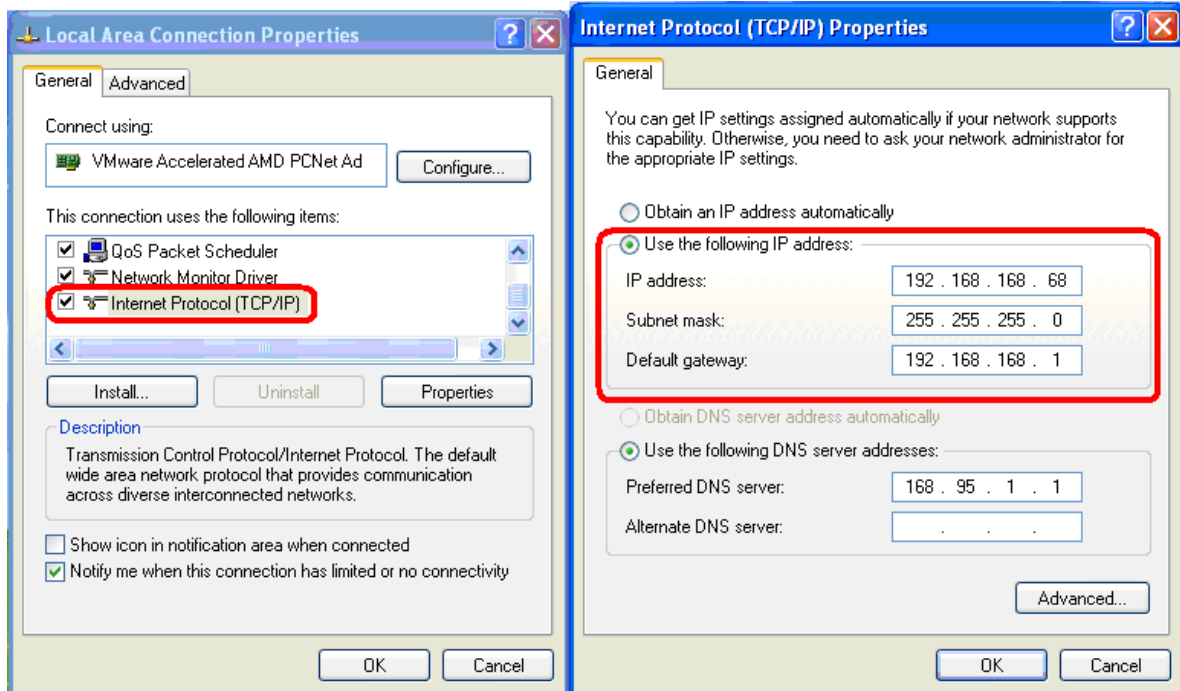
WINDOWS XP :

《 Step 1 》

Click WINDOWS XP my computer  , Open Control Pan  Control Panel on the left side, please turn to traditional overview and select network link

《 Step 2 》

Click LAN, then select content, the link configuration will be shown, click Internet Protocol (TCP/IP), then input the same setting as CYT-100SC, as below figure:



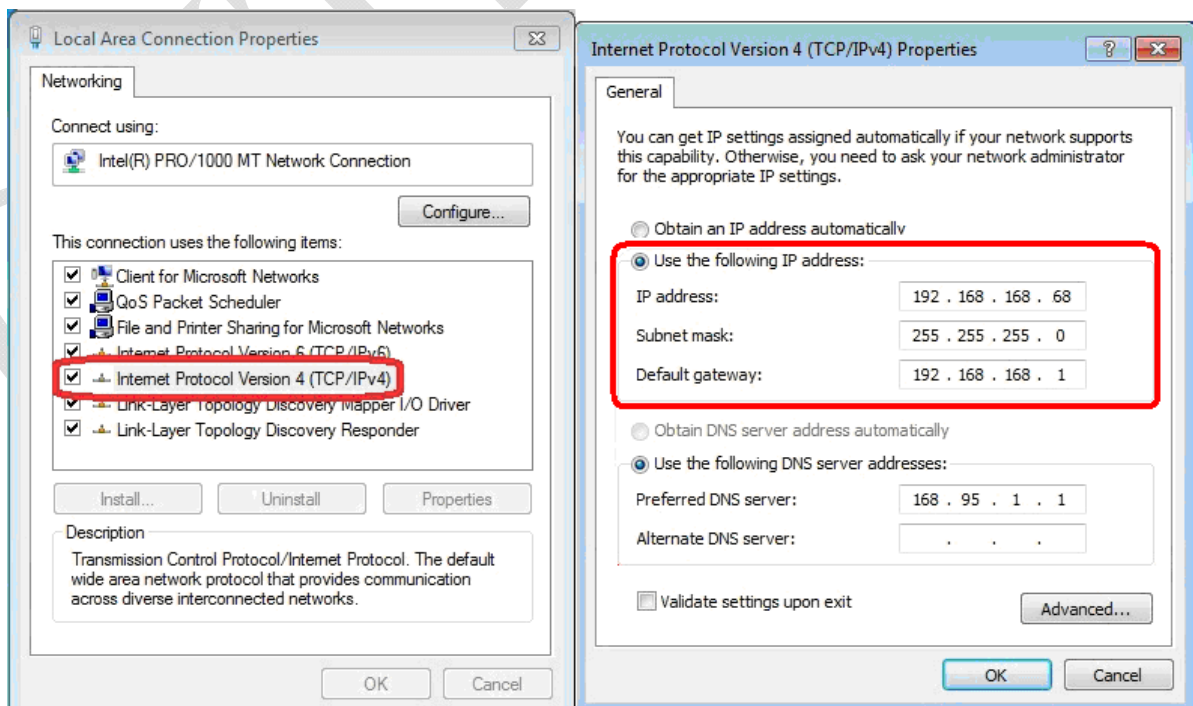
WINDOWS 7 :

《 Step 1 》

Click Windows 7 icon,  select  Control Panel , open and search for ,  Network and Sharing Center click Alter Interface Card on the upper-left side.

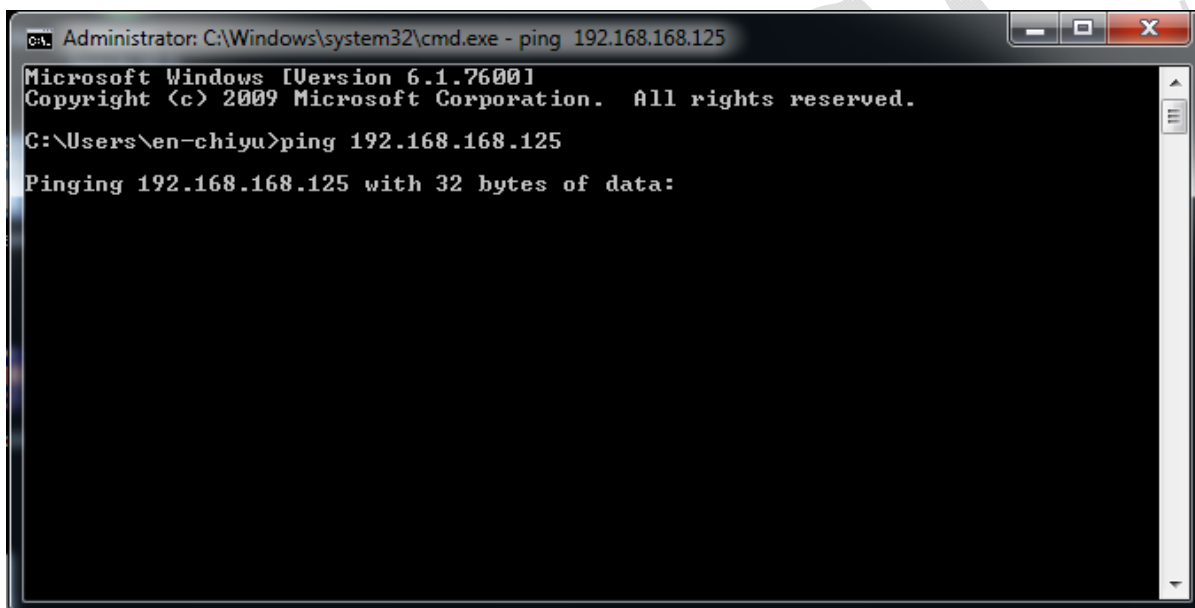
《 Step 2 》

Click LAN link, select content, then the LAN settings will be shown, click Internet Protocol(TCP/IPv4) , then input the same setting as CYT-100SC, as below figure:



◆ How to login to CYT-100SC Web via web browser

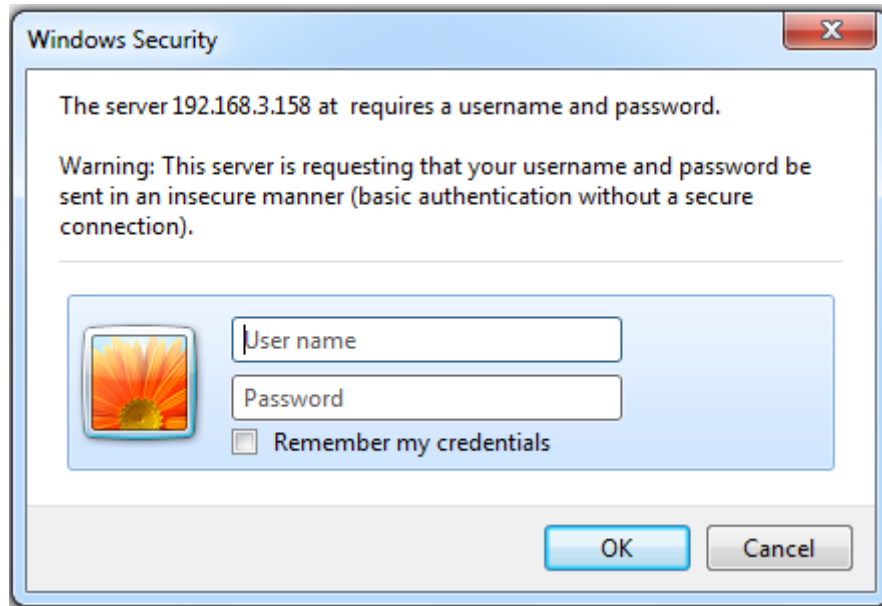
- 1、Start Web browser (eg: WIN 7 IE), input CYT-100SC's IP Address, for example: use the default CYT-100SC IP Address: <http://192.168.168.125>
- 2、If connection failed, should check:
 - If CYT-100SC installed and its power supplied properly
 - To examine the LAN connection, can use start tools→Execute→Input cmd open MS-DOS, Input “ ping” to test CYT-100SC connection, input command: ping 192.168.168.125, as shown below:



```
Administrator: C:\Windows\system32\cmd.exe - ping 192.168.168.125
Microsoft Windows [Version 6.1.7600]
Copyright (c) 2009 Microsoft Corporation. All rights reserved.
C:\Users\en-chiyu>ping 192.168.168.125
Pinging 192.168.168.125 with 32 bytes of data:
```

- If no response received, it explains the link has troubles either the connection is not proper or the PC's IP address can not match with CYT-100SC's IP address
- Set the PC's IP address with CYT-100SC's IP address with same segment, if the PC uses fixed IP address, the address must be ranged in: 192.168.168.1 ~ 192.168.168.65 or 192.168.168.67 ~ 192.168.168.254 , thus it can be compatible with CYT-100SC's default IP address: 192.168.168.125, the **Subnet Mask's** setting must be: 255.255.255.0, [please refer to page 6 ~ 7](#)

3 · If the connection with CYT-100SC is successful, then it will display a message window for User name and Password, the default for user name and Password is: [admin/admin](#), as shown below:



4 · While the user name and password entered, a Web setting interface of CTY-100SC will be showed, enter it will then display a “ **One Page Quick Setup** “ page.



CYT-100SC

One Page Setup

Advanced Setup

Operation Mode
Serial Type
Dynamic DNS

Management

Device Admin
System Status
Backup & Restore
Upgrade Firmware
Ping

Web Version 1.1

2011-02-09

One Page Quick Setup (Fixed IP)

TYPE: STATIC IP

| | |
|---|--------------------------|
| IP Address | 192 . 168 . 3 . 118 |
| Subnet mask | 255 . 255 . 255 . 0 |
| Gateway | 192 . 168 . 3 . 1 |
| Primary DNS | 168 . 95 . 1 . 1 |
| Serial Port Mode | |
| Baud Rate | 19200 0 (User Defined) |
| Operation Mode | |
| Connection Mode | TCP SERVER |
| Connection Port Number | 50000 |
| Remote Host IP/Domain Name(For Client Only) | 0.0.0.0 |

APPLY CANCEL BACK

IV 、 Web Function Instruction

◆ One Page Quick Setup



CYT-100SC

One Page Setup

Advanced Setup

Operation Mode

Serial Type

Dynamic DNS

Management

Device Admin

System Status

Backup & Restore

Upgrade Firmware

Ping

One Page Quick Setup (Fixed IP)

TYPE: STATIC IP

| | |
|---|----------------------------|
| IP Address | 192 . 168 . 3 . 118 |
| Subnet mask | 255 . 255 . 255 . 0 |
| Gateway | 192 . 168 . 3 . 1 |
| Primary DNS | 168 . 95 . 1 . 1 |
| Serial Port Mode | |
| Baud Rate | 19200 [v] 0 (User Defined) |
| Operation Mode | |
| Connection Mode | TCP SERVER [v] |
| Connection Port Number | 50000 |
| Remote Host IP/Domain Name(For Client Only) | 0.0.0.0 |

APPLY CANCEL BACK

Web Version 1.1

2011-02-09

● Function instruction of STATIC IP

| Function | Description |
|---|---|
| IP Address | Set the IP address of the CYT-100SC , default setting is 192.168.168.125 |
| Subnet mask | Set the subnet mask of the CYT-100SC , default setting is 255.255.255.0 |
| Gateway | Set the gateway of the CYT-100SC , default setting is 192.168.168.254 |
| Primary DNS | Set the DNS of the CYT-100SC , default setting is 168.95.1.1 |
| Serial Port Mode | |
| Baud Rate | 1.Set serial port baud rate, the parameters can be selected : 1200 、 2400 、 4800 、 9600 、 19200 、 38400 、 57600 、 115200 、 230400 and Others 2.After selecting Others , fill custom baud rate into the user defined 3.Default setting is 19200 |
| Operation Mode | |
| Connection Mode | There are 4 modes to set into connection mode, such as : <ul style="list-style-type: none"> ● Real Com ● TCP SERVER ● TCP CLIENT ● UDP |
| Connection Port Number | Set CYT-100SC connection port number, default setting is 50000 |
| Remote Host IP/Domain Name(For Client Only) | 1.Set the remote host IP or domain name , default setting is 0.0.0.0 2. For Client Only |

One Page Quick Setup (DHCP Client)

TYPE: DHCP CLIENT

One Page Setup

Advanced Setup

- Operation Mode
- Serial Type
- Dynamic DNS

Management

- Device Admin
- System Status
- Backup & Restore
- Upgrade Firmware
- Ping

| | |
|--|------------------------|
| Host Name (optional) | CHIYU |
| Serial Port Mode | |
| Baud Rate | 19200 0 (User Defined) |
| Operation Mode | |
| Connection Mode | TCP SERVER |
| Connection Port Number | 50000 |
| Remote Host IP/Domain Name (For Client Only) | 0.0.0.0 |

APPLY CANCEL BACK

Web Version 1.1

2011-02-09

● Function instruction of DHCP CLIENT

| Function | Description |
|--|--|
| Host Name (optional) | Fill in the host name , default setting is CHIYU (optional) |
| Serial Port Mode | |
| Baud Rate | 1.Set serial port baud rate, the parameters can be selected : 1200 、 2400 、 4800 、 9600 、 19200 、 38400 、 57600 、 115200 、 230400 and Others 2.After selecting Others , fill custom baud rate into the user defined 3.Default setting is 19200 |
| Operation Mode | |
| Connection Mode | There are 4 modes to set into connection mode, such as : <ul style="list-style-type: none"> ● Real Com ● TCP SERVER ● TCP CLIENT ● UDP |
| Connection Port Number | Set CYT-100SC connection port number, default setting is 50000 |
| Remote Host IP/Domain Name (For Client Only) | 1.Set the remote host IP or domain name , default setting is 0.0.0.0 2. For Client Only |

One Page Quick Setup (PPPoE)

TYPE: PPPoE

One Page Setup

Advanced Setup

- Operation Mode
- Serial Type
- Dynamic DNS

Management

- Device Admin
- System Status
- Backup & Restore
- Upgrade Firmware
- Ping

Web Version 1.1

2011-02-09

| | |
|---|--|
| User Name | <input type="text"/> (1 - 47) |
| Password | <input type="password"/> (1 - 35) |
| Service Name(optional) | <input type="text"/> (1 - 47) |
| Close Connection when Idle Time Over | <input type="text" value="0"/> (seconds) |
| PPPoE with Fixed IP Address | <input type="text" value="DISABLE"/> <input type="text"/> . <input type="text"/> . <input type="text"/> . <input type="text"/> |
| Serial Port Mode | |
| Baud Rate | <input type="text" value="19200"/> <input type="text" value="0"/> (User Defined) |
| Operation Mode | |
| Connection Mode | <input type="text" value="TCP SERVER"/> |
| Connection Port Number | <input type="text" value="50000"/> |
| Remote Host IP/Domain Name(For Client Only) | <input type="text" value="0.0.0.0"/> |

APPLY CANCEL BACK

● Function instruction of PPPoE

| Function | Description |
|---|---|
| User Name | Fill in the user name, up to 47 characters |
| Password | Fill in the password, up to 35 characters |
| Service Name (optional) | Fill in the service name (optional), up to 47 characters |
| Close Connection when Idle Time Over | <ul style="list-style-type: none"> ● Default setting is 0 second, the range is from 0 ~ 4294967295 ● Keep the connection of CYT-100SC and ISP always must set the no into 0 or the connection with PPPoE will be disabled when Idle time over. |
| PPPoE with Fixed IP Address | <ul style="list-style-type: none"> ● After selecting ENABLE , fill in fixed IP ● Default setting is DISABLE ● optional |
| Serial Port Mode | |
| Baud Rate | 1.Set serial port baud rate, the parameters can be set : 1200 、 2400 、 4800 、 9600 、 19200 、 38400 、 57600 、 115200 、 230400 and Others 2.After selecting Others , fill custom baud rate into the user defined 3.Default setting is 19200 |
| Operation Mode | |
| Connection Mode | There are 4 modes to set into connection mode, such as : <ul style="list-style-type: none"> ● Real Com ● TCP SERVER ● TCP CLIENT ● UDP |
| Connection Port Number | Set CYT-100SC connection port number, default setting is 50000 |
| Remote Host IP/Domain Name(For Client Only) | 1.Set the remote host IP or domain name , default setting is 0.0.0.0 2. For Client Only |

◆ Advanced Setup

1、Operation Mode

(1)TCP Server



CYT-100SC

| |
|--------------------------------|
| One Page Setup |
| Advanced Setup |
| Operation Mode |
| Serial Type |
| Dynamic DNS |
| Management |
| Device Admin |
| System Status |
| Backup & Restore |
| Upgrade Firmware |
| Ping |

Operation Mode Setup (TCP Server)

MODE: TCP SERVER

| | |
|-----------------------------------|---|
| Local Listen Port Number | <input type="text" value="50000"/> |
| Close Connection When Remote Idle | <input type="text" value="100"/> (seconds) |
| Access Password | <input type="text"/> (maxlen 31) |
| Keep Alive Check | <input checked="" type="radio"/> Disable <input type="radio"/> Enable |
| Max TCP Connection | <input type="text" value="1"/> |
| Real COM | <input type="checkbox"/> ENABLE |

Web Version 1.1

2011-02-09

● Function instruction

| Function | Description |
|-----------------------------------|---|
| Local Listen Port Number | <ul style="list-style-type: none"> ● If data transmit thru TCP/IP remote command, must select Serial Server Mode into TCP SERVER and set LISTEN PORT NUMBER into the same value with monitoring side. ● Default setting is 50000 |
| Close Connection When Remote Idle | <ul style="list-style-type: none"> ● The default setting of close connection time is 100 seconds and the range is from 0 ~ 32768 ● The value must set to be 0 if you want to keep CYT-100SC connect with monitoring side or the connection will be off automatically when remote idle. |
| Access Password | <ul style="list-style-type: none"> ● Make sure the data secure, user must set the code for management. User must inset the correct password and process the further procedure after authority. ● up to 31 characters |
| Keep Alive Check | <ul style="list-style-type: none"> ● Set Enable or Disable keep alive check function , default setting is Disable ● While keep alive check enable, the pin packet will be send to Gateway every 30 seconds to make cure the connection. |
| Max TCP Connection | The maximum TCP connection is 4 sets , default setting is 1 |
| Real COM | When using the Virtual COM , if you need CYT-100SC with VCOM to send each other RTS / CTS, DTR / DSR signal, this option must be checked |

(2) TCP Client



CYT-100SC

| |
|-----------------------|
| One Page Setup |
| Advanced Setup |
| Operation Mode |
| Serial Type |
| Dynamic DNS |
| Management |
| Device Admin |
| System Status |
| Backup & Restore |
| Upgrade Firmware |
| Ping |

Operation Mode Setup (TCP Client)

MODE: TCP CLIENT

| | |
|------------------------------------|---|
| Remote Connection Port Number | 50000 (0 - 65535) |
| Remote Host IP Address/Domain Name | 0.0.0.0 |
| TCP Connection | <input type="radio"/> Start Up <input checked="" type="radio"/> Any Character |

APPLY CANCEL BACK

Web Version 1.1

2011-02-09

● Function instruction

| Function | Description |
|------------------------------------|--|
| Remote Connection Port Number | Set the remote connection port number , the range is 0 ~ 65535 , default setting is 50000 |
| Remote Host IP Address/Domain Name | Set remote host IP address or domain name , default setting is 0.0.0.0 |
| TCP Connection | <ul style="list-style-type: none"> ● There are 2 modes to set TCP connection to server : <ol style="list-style-type: none"> 1. Start Up : This mode means when CYT-100SC enable, it will build the TCP connection with SERVER immediately. It will automatically build the TCP connection after disable and then re-connect again. 2. Any Character : This mode means only when CYT-100SC receives data from RS232/422/485, it will build TCP connection with SERVER. TCP connection will be disable if not receiving the data from RS232/422/485. |

(3)UDP



CYT-1005C

| |
|--------------------------------|
| One Page Setup |
| Advanced Setup |
| Operation Mode |
| Serial Type |
| Dynamic DNS |
| Management |
| Device Admin |
| System Status |
| Backup & Restore |
| Upgrade Firmware |
| Ping |

Operation Mode Setup (UDP)

MODE: UDP

| | |
|------------------------------------|-------------------------------------|
| Remote Connection Port Number | 50000 (0 - 65535) |
| Remote Host IP Address/Domain Name | 0.0.0.0 |
| Local Listen Port | 50000 (0 - 65535) |
| Heart Beat | Disable per 30 (seconds, max 65535) |

APPLY CANCEL BACK

Web Version 1.1

2011-02-09

● Function instruction

| Function | Description |
|------------------------------------|---|
| Remote Connection Port Number | Set the remote connection port number , the range is 0 ~ 65535 , default setting is 50000 |
| Remote Host IP Address/Domain Name | Set remote host IP address or domain name , default setting is 0.0.0.0 |
| Local Listen Port | Set the local listen port , default setting is 50000 |
| Heart Beat | How many seconds to transmit a UDP heart beat to server can be selected. It's helpful to know the connection with SERVER enabled. Default setting is Disabled , and the maximum setting is 65535 seconds. |

2、Serial Port Setup



Serial Port Setup

| |
|-----------------------------|
| One Page Setup |
| Advanced Setup |
| Operation Mode |
| Serial Type |
| Dynamic DNS |
| Management |
| Device Admin |
| System Status |
| Backup & Restore |
| Upgrade Firmware |
| Ping |

| | |
|------------------------------|--|
| Baud Rate | 19200 <input type="button" value="v"/> 0 <input type="text"/> (User Defined) |
| Data Bits | 8 <input type="button" value="v"/> |
| Parity Check | None <input type="button" value="v"/> |
| Stop Bits | 1 <input type="button" value="v"/> |
| Flow Control | None <input type="button" value="v"/> |
| Force Packet Transmit Time | 2 <input type="text"/> (10ms unit) |
| Force Packet Transmit Length | 1000 <input type="text"/> (1 - 1500)bytes |
| Delimiter 1 | 0x 00 <input type="text"/> (HEX) <input type="radio"/> Enable <input checked="" type="radio"/> Disable |
| Delimiter 2 | 0x 00 <input type="text"/> (HEX) <input type="radio"/> Enable <input checked="" type="radio"/> Disable |

Web Version 1.1

2011-02-09

● Function instruction

| Function | Description |
|--------------------------------------|--|
| Baud Rate | <ol style="list-style-type: none"> 1.Set serial port baud rate, the parameters can be selected : 1200、2400、4800、9600、19200、38400、57600、115200、230400 and Others 2.After selecting Others, fill custom baud rate into the user defined 3.Default setting is 19200 |
| Data Bits | Set the data bits, 5,6,7,8 parameters can be selected, default setting is 8 |
| Parity Check | <ul style="list-style-type: none"> ● Set the parity check, 4 parameters can be selected : <ol style="list-style-type: none"> 1.odd 2.Even 3.Mark 4.Space ● Default setting is None |
| Stop Bits | Set the stop bits, 1,2 parameters can be selected, default setting is 1 |
| Flow Control | Set the flow control, 2 parameters can be selected : <ul style="list-style-type: none"> ● Xon/Xoff : Software flow control ● CTS/RTS : Hardware flow control ● Default setting is None |
| Force Packet Transmit Time (10ms) | <ul style="list-style-type: none"> ● Force packet transmit time ● The minimum setting is 10ms of setting serial interval between data. Default setting is 20ms. |
| Force Packet Transmit Length (bytes) | <ul style="list-style-type: none"> ● Force packet transmit length. ● The serial set length of data transmission range is from 1 ~ 1500bytes. Default setting is 1000 |
| Delimiter 1 | <ul style="list-style-type: none"> ● Set the transmission data end by identified delimiter and if your transmission data includes the identified delimiter, CYT-100SC will send out packet at once. ● Default setting is disabled. The range is from 0x00 ~ 0xFF |
| Delimiter 2 | <ul style="list-style-type: none"> ● Set the transmission data end by identified delimiter and if your transmission data includes the identified delimiter, CYT-100SC will send out packet at once. ● Default setting is disabled. The range is from 0x00 ~ 0xFF |

3 · DDNS Setup

(1)TZ0



CYT-100SC

DDNS Setup

DDNS Services: TZ0

One Page Setup

Advanced Setup

Operation Mode

Serial Type

[Dynamic DNS](#)

Management

Device Admin

System Status

Backup & Restore

Upgrade Firmware

Ping

| | | |
|-----------------------|---------------------------|------------------------|
| Email Address: | <input type="text"/> | (maximum 47) |
| Password key: | <input type="text"/> | (maximum 31) |
| Device DNS Name: | <input type="text"/> | (ex. hostname.tzo.com) |
| Registry IP Address : | 192.168.3.126 | |
| Status : | DDNS function is disabled | |

Web Version 1.1

2011-02-09

● Function instruction

| Function | Description |
|---------------------|--|
| E-mail Address | Fill in the E-mail address for DDNS , up to 47 characters |
| Password key | Fill in the password key for DDNS , up to 31 characters |
| Device DNS Name | Fill in the device DNS name , for example : hostname.tzo.com |
| Registry IP Address | Display the registry IP address , when DDNS is enabled, It will show the registry IP address |
| Status | Display DNS Serve status , when DDNS server does not enable ,it will show "DDNS function is disabled" |

(2) Dyndns



CYT-100SC

| |
|-----------------------------|
| One Page Setup |
| Advanced Setup |
| Operation Mode |
| Serial Type |
| Dynamic DNS |
| Management |
| Device Admin |
| System Status |
| Backup & Restore |
| Upgrade Firmware |
| Ping |

DDNS Setup

DDNS Services:

| | | |
|-----------------------|---------------------------|---------------------------|
| Username: | <input type="text"/> | (maximum 31) |
| Password: | <input type="text"/> | (maximum 31) |
| Device DNS Name: | <input type="text"/> | (ex. hostname.dyndns.org) |
| Registry IP Address : | 0.0.0.0 | |
| Status : | DDNS function is disabled | |

Web Version 1.1

2011-02-09

● Function instruction

| Function | Description |
|---------------------|--|
| Username | Fill in the username for DDNS , up to 31 characters |
| Password | Fill in the password for DDNS , up to 31 characters |
| Device DNS Name | Fill in the device DNS name , for example : hostname.dyndns.org |
| Registry IP Address | Display the registry IP address , when DDNS is enabled, It will show the registry IP address |
| Status | Display DNS Serve status , when DDNS server does not enable ,it will show "DDNS function is disabled" |

Management

1. Device Administration Setting



CYT-100SC

- One Page Setup
- Advanced Setup
 - Operation Mode
 - Serial Type
 - Dynamic DNS
- Management
 - [Device Admin](#)
 - System Status
 - Backup & Restore
 - Upgrade Firmware
 - Ping

Web Version 1.1

2011-02-09


Device Administration Setting

| | | |
|---|---|--------------------------------------|
| Block Standard Http Port(80) Management | <input checked="" type="radio"/> UNBLOCK <input type="radio"/> BLOCK <input type="text"/> | |
| Device Management IP Address | <input type="text" value="192"/> <input type="text" value="168"/> <input type="text" value="200"/> <input type="text" value="200"/> | <input type="button" value="APPLY"/> |
| Device Hostname | <input type="text" value="CHIYU"/> | |
| Device Location | <input type="text"/> | |
| Administrator Password | User Name <input type="text"/> Password Change <input type="password" value="....."/> Password Confirm <input type="password" value="....."/> | <input type="button" value="APPLY"/> |
| Block Ping Request | <input checked="" type="radio"/> UNBLOCK <input type="radio"/> BLOCK | <input type="button" value="APPLY"/> |
| MAC Address Change | <input type="text" value="00"/> : <input type="text" value="00"/> : <input type="text" value="00"/> : <input type="text" value="00"/> : <input type="text" value="00"/> : <input type="text" value="00"/> | <input type="button" value="APPLY"/> |
| <input type="button" value="Reset System to Factory Default"/> <input type="button" value="FACTORY DEFAULT"/> | | |
| <input type="button" value="Reboot System"/> <input type="button" value="REBOOT"/> | | |
| <input type="button" value="BACK"/> | | |

● Function instruction

| Function | Description |
|---|--|
| Block Standard Http Port(80) Management | <ul style="list-style-type: none"> ● Select unblock or block standard http port , default setting is UNBLOCK(80) ● If other port sequence has to be set, select BLOCK, and then fill in the port sequence. |
| Device Management IP Address | Display and set the device management IP address , default setting is 192.168.200.200 |
| Device Hostname | Fill in the device hostname, default setting is CHIYU |
| Device Location | Fill in the device location , default setting is blank |
| Administrator Password | <ul style="list-style-type: none"> ● User Name : Fill in the user name ● Password Change : Change the password, for security reasons, please fill in a new password to replace the default management ● Password Confirm : Confirm the new password |
| Block Ping Request | Select unblock or block ping request function , default setting is unblock |
| MAC Address Change | If you want to change the MAC address, fill in the new MAC address |
| Reset System to Factory Default | Execute this function will reset system to factory default |
| Reboot System | Execute this function will reboot system |

2 · System Status Monitor



One Page Setup

Advanced Setup

- Operation Mode
- Serial Type
- Dynamic DNS

Management

- Device Admin
- System Status
- Backup & Restore
- Upgrade Firmware
- Ping

| System Status | | | | | |
|---------------------------|---|-----------|------------|-----------|------------|
| Product Name: | CYT-100SC | | | | |
| Firmware Version: | 1.03.00, Aug 21 2014 | | | | |
| System Up Time: | 0H:16M:44S | | | | |
| Ethernet Status | | | | | |
| IP Configuration Mode: | STATIC IP | | | | |
| Operation Mode: | TCP SERVER | | | | |
| Connection Port: | 50000 | | | | |
| MAC Address: | 00:0e:e3:02:8b:a8 | | | | |
| IP Address: | 192.168.168.125 | | | | |
| Subnet mask: | 255.255.255.0 | | | | |
| Default Gateway: | 192.168.168.254 | | | | |
| Primary DNS: | 168.95.1.1 | | | | |
| STATUS: | Up | | | | |
| Serial Status | | | | | |
| Force Packet Time/Length: | 20(ms)/1000(Bytes) | | | | |
| Baud Rate: | 9600 | | | | |
| Data Bits: | 8 | | | | |
| Parity Check: | none | | | | |
| Stop Bits: | 1 | | | | |
| Flow Control: | None | | | | |
| Statistic | | | | | |
| Ethernet : | <table border="1" style="width: 100%; border-collapse: collapse;"> <tr> <td style="width: 50%;">TX Bytes:</td> <td>3084 bytes</td> </tr> <tr> <td>RX Bytes:</td> <td>1925 bytes</td> </tr> </table> | TX Bytes: | 3084 bytes | RX Bytes: | 1925 bytes |
| TX Bytes: | 3084 bytes | | | | |
| RX Bytes: | 1925 bytes | | | | |
| Serial: | <table border="1" style="width: 100%; border-collapse: collapse;"> <tr> <td style="width: 50%;">TX Bytes:</td> <td>1925 bytes</td> </tr> <tr> <td>RX Bytes:</td> <td>3084 bytes</td> </tr> </table> | TX Bytes: | 1925 bytes | RX Bytes: | 3084 bytes |
| TX Bytes: | 1925 bytes | | | | |
| RX Bytes: | 3084 bytes | | | | |

Web Version 1.2
2014-08-21

● Function instruction

| Function | Description |
|--------------------------|--|
| Product Name | Display the product name : CYT-100SC |
| Firmware Version | Display the firmware version : 1.01.00, Mar 4 2011 |
| System Up Time | Display system up time , the sequence is hour/minute/second |
| Ethernet Status | |
| IP Configuration Mode | Display the IP configuration , default setting is STATIC IP |
| Operation Mode | Display the operation mode , default setting is TCP SERVER |
| Connection Port | Display the connection port , default setting is 50000 |
| MAC Address | Display the MAC address of CYT-100SC |
| IP Address | Display CYT-100SC address, default setting is 192.168.168.125 |
| Subnet mask | Display CYT-100SC Subnet mask, default setting is 255.255.255.0 |
| Default Gateway | Display CYT-100SC Default Gateway, default setting is 192.168.168.254 |
| Primary DNS | Display CYT-100SC Primary DNS address, default setting is 168.95.1.1 |
| STATUS | Display CYT-100SC internet status |
| Serial Status | |
| Force Packet Time/Length | Display Force Packet Time/Length, default setting is 20ms/1000bytes |
| Baud Rate | Display Baud Rate, default setting is 19200 |
| Data Bits | Display Data Bits, default setting is 8 |
| Parity Check | Display Parity Check, default setting is None |
| Stop Bits | Display Stop Bits, default setting is 1 |
| Flow Control | Display Flow Control, default setting is None |
| Statistic | |
| Ethernet | RX & TX display the total data amount of data receive and transmission of Ethernet . |
| Serial | RX & TX display the total data amount of data receive and transmission of Serials . <ul style="list-style-type: none"> TCP/UDP Session Down Serial Communication OK Device doesn't communicate back within 5 seconds To view latest Serial Status, please press System Status again or refresh web page. |

3 · Backup & Restore Configuration



CYT-1005C

| |
|----------------------------------|
| One Page Setup |
| Advanced Setup |
| Operation Mode |
| Serial Type |
| Dynamic DNS |
| Management |
| Device Admin |
| System Status |
| Backup & Restore |
| Upgrade Firmware |
| Ping |

Backup & Restore Configuration

Backup

Restore

Please select a configuration file to restore :

Web Version 1.1

2011-02-09

● Function Instruction

| Function | Description |
|----------|---|
| Backup | After execution, can save the present system settings as a backup file, and save it in hardware, the sub-name of the saved file is .cfg |
| Restore | Browse and select saved file(.cfg), execute Restore to restore system settings |

4、Firmware Upgrade



CYT-1005C

| |
|----------------------------------|
| One Page Setup |
| Advanced Setup |
| Operation Mode |
| Serial Type |
| Dynamic DNS |
| Management |
| Device Admin |
| System Status |
| Backup & Restore |
| Upgrade Firmware |
| Ping |

Web Version 1.1

2011-02-09

Firmware Upgrade

Warning: Upgrade must NOT be interrupted

Please select a file to upgrade



● Function Instruction

| Function | Description |
|---------------------------------|---|
| Please select a file to upgrade | <ul style="list-style-type: none"> ● Browse and select firmware, execute Upgrade to upgrade firmware ● Has to assure the possibility of power supply during the process of upgrading, or severe damage will be caused. What if upgrade different firmware to different products, and it will also cause severe damage. |

5、PING



CYT-100SC

One Page Setup

Advanced Setup

Operation Mode

Serial Type

Dynamic DNS

Management

Device Admin

System Status

Backup & Restore

Upgrade Firmware

[Ping](#)

Networking Diagnostic (PING)

| | |
|--------------------------|---|
| Source IP Address : | 192.168.3.118 |
| Destination IP Address : | <input type="text" value="0"/> . <input type="text" value="0"/> . <input type="text" value="0"/> . <input type="text" value="0"/> |
| Packet Number : | <input type="text" value="4"/> (1 ~ 4) |
| Packet Size : | <input type="text" value="60"/> (maximum 1460 Bytes) |
| Ping Result : | Sent Request: 0 |
| | Receive Reply: 0 |

Web Version 1.1

2011-02-09

● Function Instruction

| Function | Description |
|------------------------|---|
| Source IP Address | Display CYT-100SC IP address |
| Destination IP Address | Input IP address of Remote Host |
| Packet Number | Set up the number of PING package, ranged 1 ~4 , the default 4 |
| Ping Size | Set up the size of PING package, the utmost setting 1460 bytes . |
| Ping Result | <ul style="list-style-type: none"> ● Display Sent Request data ● Display Receive Reply data |