

# SYRIS Network RFID Desktop Reader



V 1.00 [2021/1/15]

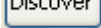
Model : SYSR86N-H3 specifications:

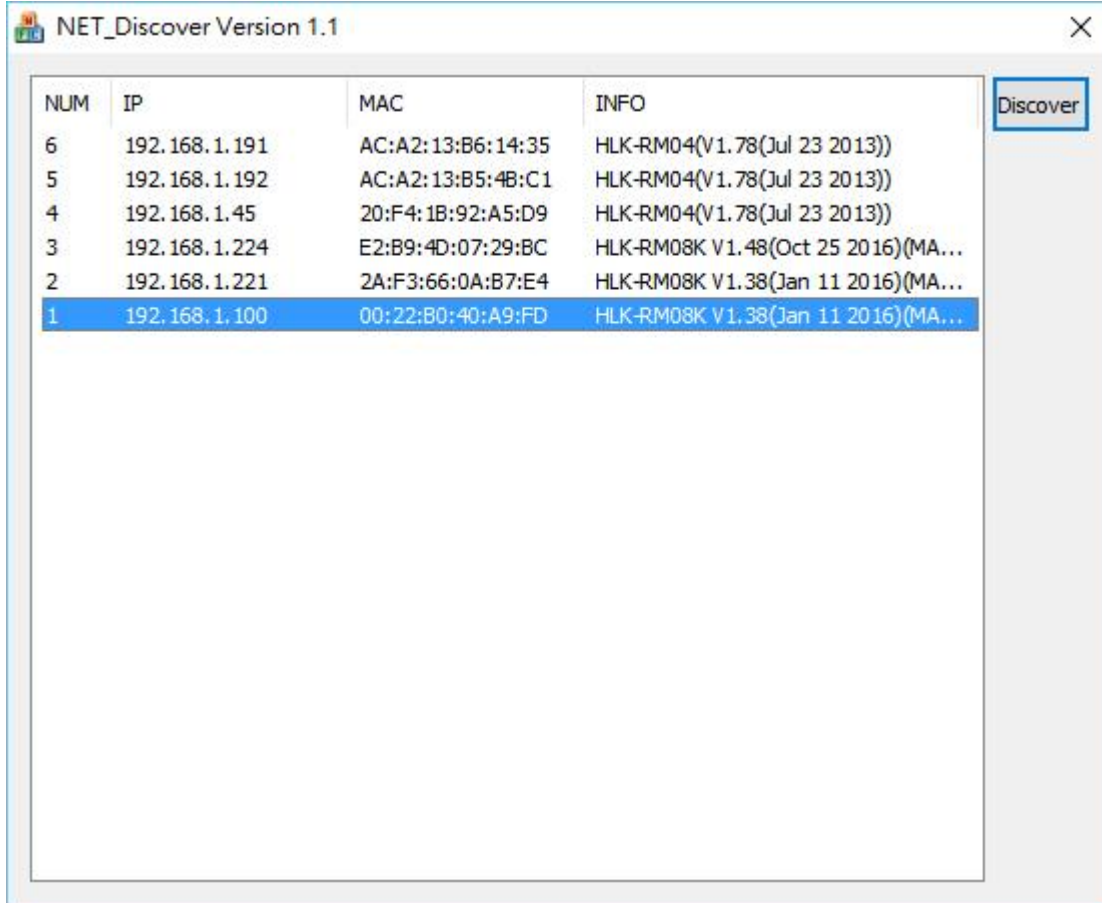
Frequency	13.56MHz
HF Protocols	ISO15693 / ISO14443A / ISO14443B / Mifare block
HF Read range	Up to 5 cm
Ethernet	10M/100M Ethernet Port
Wi-Fi	802.11 b/g/n
Status Indicator	Tricolor LED(RGB) & Beeper
Configuration Interface	Micro USB / Ethernet / Wi-Fi
Digital Output	2 Relay output
Power Supply	12 VDC
Power consumption	1W~6W
Operating temperature	-10°C to 60°C
Dimensions (mm)	125 x 86 x 89 mm

Model : SYUR86N-HU3 specifications:

Frequency	840~960MHz + 13.56MHz
UHF Protocols	EPC Class 1 Gen 2; ISO 18000-6C
UHF Read range	Up to 20 cm (depends on tag's antenna)
HF Protocols	ISO15693 / ISO14443A / ISO14443B / Mifare block
HF Read range	Up to 5 cm
Ethernet	10M/100M Ethernet Port
Wi-Fi	802.11 b/g/n
Status Indicator	Tricolor LED(RGB) & Beeper
Configuration Interface	Micro USB / Ethernet / Wi-Fi
Digital Output	2 Relay output
Power Supply	12 VDC
Power consumption	1W~6W
Operating temperature	-10°C to 60°C
Dimensions (mm)	125 x 86 x 89 mm

## ○ Network Parameters Setting

1. Execute "NET\_Discover\_V0110.exe" and press  to search SYRIS network device.
2. Factory default IP is "**DHCP**". User can check the MAC address from product sticker with IP to confirm the device.



3. Double click IP to open the web configure page (ex.<http://192.168.1.101>)  
**Default login ID / Password : admin / admin**

4. Default network mode as the following.

	Current	Updated
Network Mode	Default	Default
IP Type	DHCP	DHCP
AP Enable	Enable	Enable
AP SSID	SerialWiFi_91AF	SerialWiFi_91AF
AP EncType	WPA2AES	WPA2AES
AP Passwd	12345678	12345678
LAN IP Addr	192.168.16.254	192.168.16.254
LAN Mask	255.255.255.0	255.255.255.0
DHCP Server	Enable	Enable

	Current	Updated
Baudrate	230400	230400
Data Width	8	8
Parity	NONL	NONL
Stop Bit	1	1
Flow Control	Disable	Disable
Socket Protocol Type	Tcp Server	Tcp Server
Locale Port	5001	5001
Packet Framing Length	1050	1050
Packet Framing Timeout	3	3
Packet Framing Interval	3	3
TCP Timeout	0	0
Reconnect Interval	200	200
TCP Keep Alive	1	1
TCP Max Connect	100	100
Without data Timeout	60	60

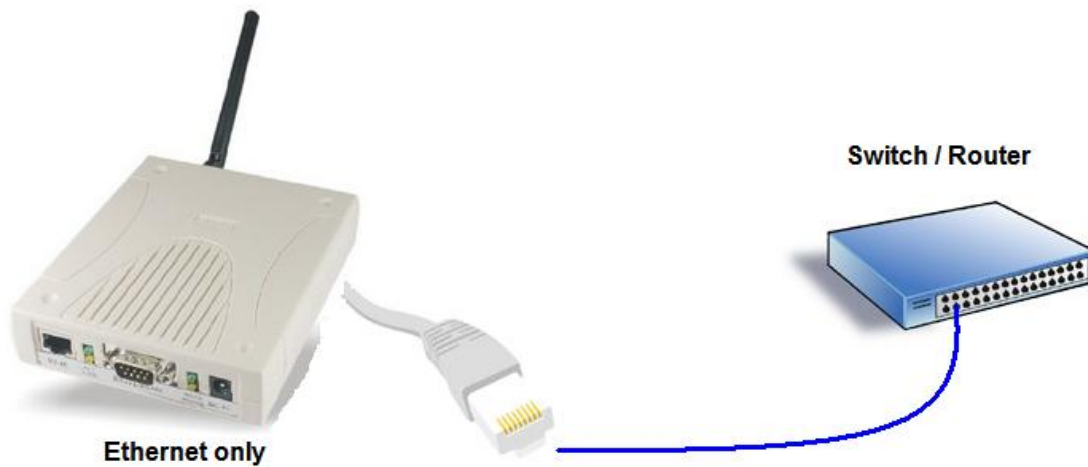
Communication Parameters	Factory Default
Serial Configure	230400,8,n,1
Serial Framing Length	1050
Locale/Remote Port Number	5001

## ○ Switch Network Mode

Reader support 3 network modes: Default · ETH(Ethernet) · Wi-Fi STA.

Default	Ethernet (DHCP) +Wi-Fi AP mode(for setting)
ETH	Ethernet only
WIFI(STA)	Wi-Fi client mode

### 1. ETH : Standard TCP/IP Reader



When user modify the IP and click on Apply button, device will reboot and apply the setting after 5 seconds.

2. Wi-Fi (STA) : Reader can set to communicate via Wireless AP.



The screenshot shows the SYRIS Network settings interface. The "Network" tab is selected. The settings are organized into two columns: "Current" and "Updated".

	Current	Updated
Network Mode	ETH	WIFI(STA) ▾
STA SSID	Delta-IoT	Test <input type="button" value="Scan"/>
STA EncType	Open	WPAWPA2AES ▾
STA Passwd		12345678
IP Type	Static	DHCP ▾

At the bottom of the settings area are two buttons: "Apply" and "Cancel".

**STA SSID:** Enter the correct AP's SSID.

**STA EncType :** Select Encrypt type for AP connection.

**STA Passwd:** Enter correct AP's password.

**IP Type:** Default is DHCP mode. If user needs to setup a static IP, please select Static.

- Default mode : Ethernet (DHCP) +Wi-Fi AP mode.  
It's Dual-Mode ( Ethernet and Wi-Fi AP.)



**Settings** | Network | Serial 0 | Serial 1

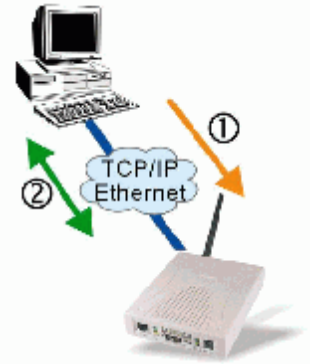
	Current	Updated
Network Mode	ETH	Default ▾
IP Type	Static	DHCP ▾
AP Enable	Disable	Enable ▾
AP SSID	SerialWIFI_C57C	SerialWIFI_C57C
AP EncType	WPA2AES	WPA2AES ▾
AP Passwd	12345678	12345678
LAN IP Addr	192.168.16.254	192.168.16.254
LAN Mask	255.255.255.0	255.255.255.0
DHCP Server	Disable	Enable ▾

**Default SSID:** SerialWIFI\_C57C (C57C is depends on MAC address)

**Default Password:** 12345678

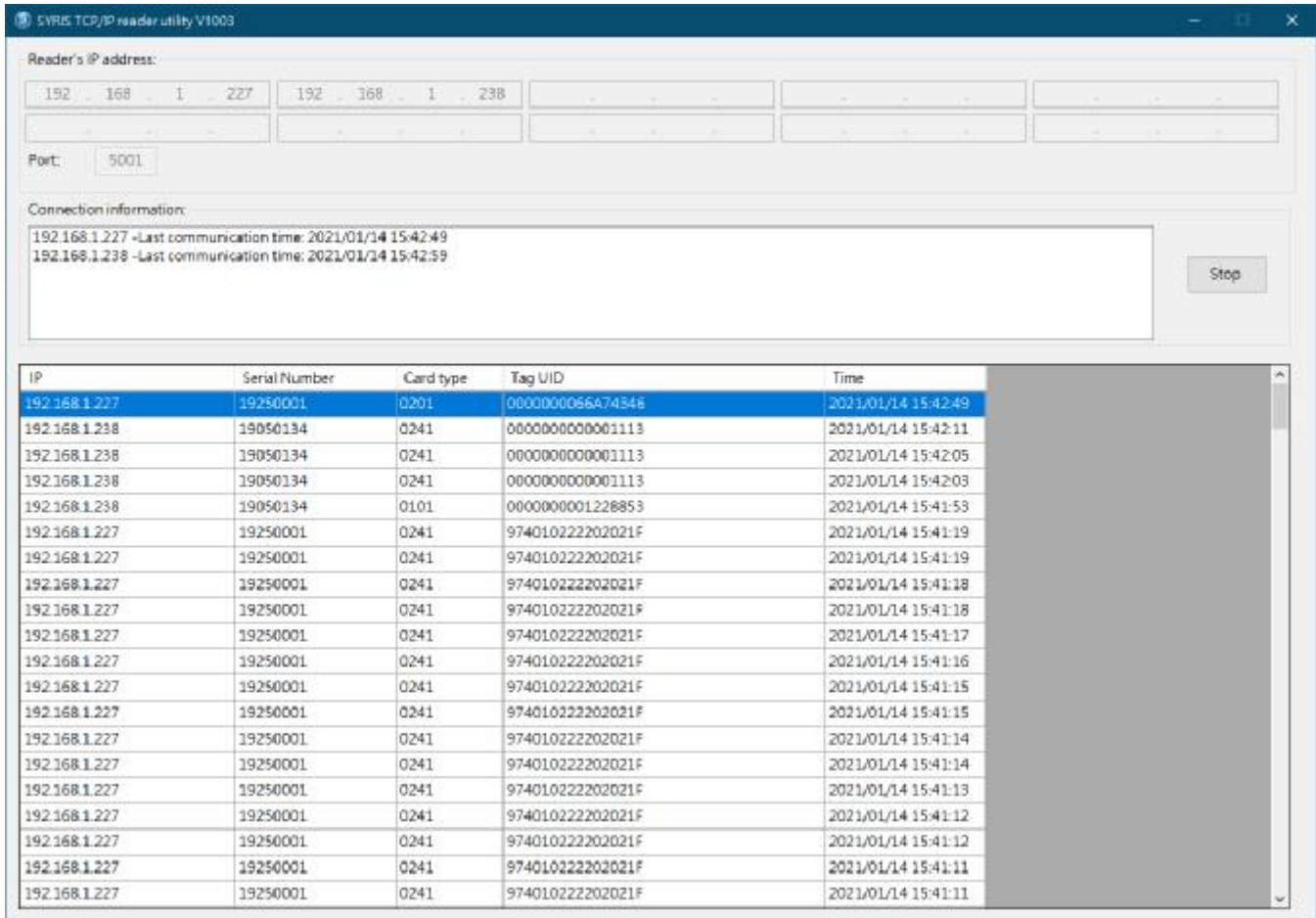
## ○ SYRIS TCP reader utility

In TCP Server mode, reader provides a unique IP:Port address on a TCP/IP network. Reader wait passively to be contacted by the host computer, allowing the host computer to establish a connection with and get data from the serial device.



With default operating mode (TCP server), you can execute [SYRIS TCP reader utility](#) to read TAG.

([SYRIS RFID CD-ROM\SYRIS TCP reader utility](#))



### Field description:

IP : Reader's IP address

Serial Number : Reader's serial number

Card type : Type of card was read (depends on different model)

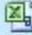




0101	EM tag UID	0204	ISO15693 tag UID
0201	Mifare tag UID	0241	UHF tag UID
0202	Mifare block data		
0203	ISO 14443B tag UID		

Tag UID : Read tag's ID.

Time : Software receive tag's time.



- Read log will auto save in software's folder.

 20210114.csv	2021/1/14 15:42
 20210114_RawData.log	2021/1/14 15:48
 IPAddressControlLib.dll	2017/1/18 13:38
 NET_Discover_V0110.exe	2015/6/25 15:50
 SYRIS TCP reader utility.exe	2021/1/13 09:53

```
192.168.1.227,19250001,0241,974010222202021F,2021/01/14 15:41:11
192.168.1.227,19250001,0241,974010222202021F,2021/01/14 15:41:11
192.168.1.227,19250001,0241,974010222202021F,2021/01/14 15:41:12
192.168.1.227,19250001,0241,974010222202021F,2021/01/14 15:41:12
192.168.1.227,19250001,0241,974010222202021F,2021/01/14 15:41:13
192.168.1.227,19250001,0241,974010222202021F,2021/01/14 15:41:14
192.168.1.227,19250001,0241,974010222202021F,2021/01/14 15:41:14
192.168.1.227,19250001,0241,974010222202021F,2021/01/14 15:41:15
192.168.1.227,19250001,0241,974010222202021F,2021/01/14 15:41:15
192.168.1.227,19250001,0241,974010222202021F,2021/01/14 15:41:16
192.168.1.227,19250001,0241,974010222202021F,2021/01/14 15:41:17
192.168.1.227,19250001,0241,974010222202021F,2021/01/14 15:41:18
192.168.1.227,19250001,0241,974010222202021F,2021/01/14 15:41:18
192.168.1.227,19250001,0241,974010222202021F,2021/01/14 15:41:19
192.168.1.227,19250001,0241,974010222202021F,2021/01/14 15:41:19
192.168.1.238,19050134,0101,0000000001228853,2021/01/14 15:41:53
192.168.1.238,19050134,0241,0000000000001113,2021/01/14 15:42:03
192.168.1.238,19050134,0241,0000000000001113,2021/01/14 15:42:05
192.168.1.238,19050134,0241,0000000000001113,2021/01/14 15:42:11
192.168.1.227,19250001,0201,0000000066A74346,2021/01/14 15:42:49
```